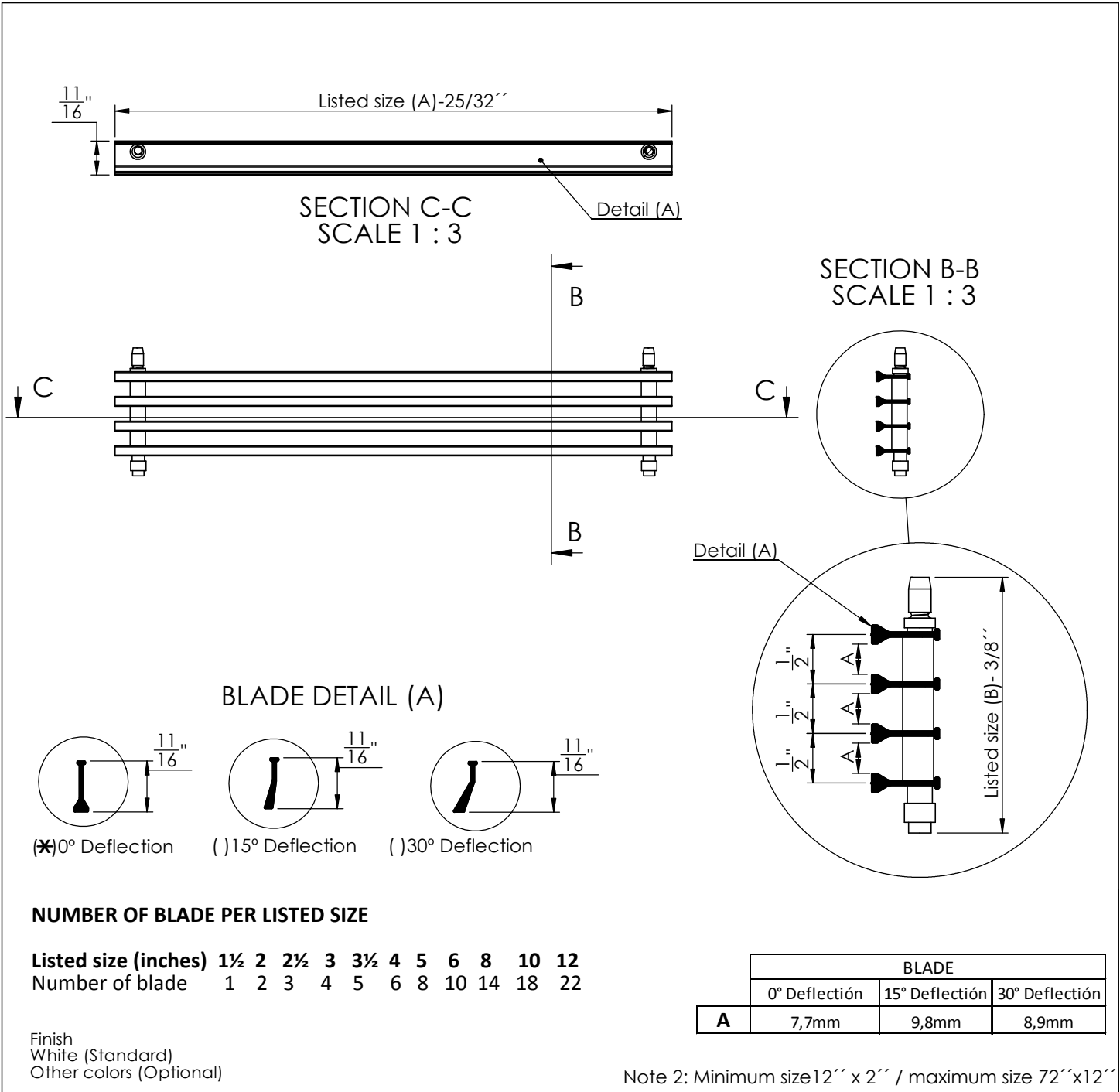




CENTRAL PATTERN L-BG



- (*) 0° Deflection
- () 15° Deflection
- () 30° Deflection

CENTRAL PATTERN L-BG

Extrude Aluminum

Job Name: _____

Location: _____

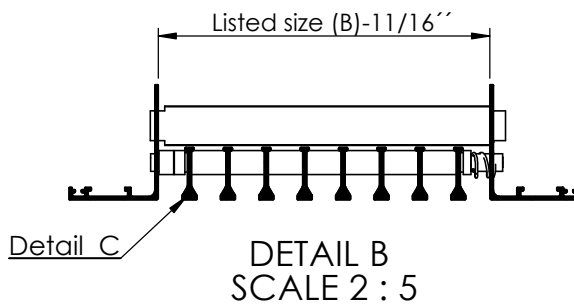
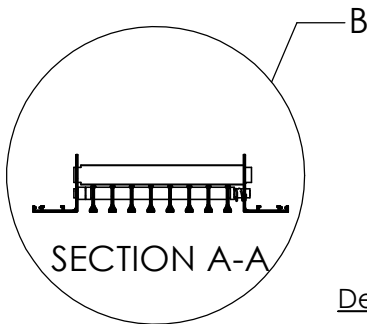
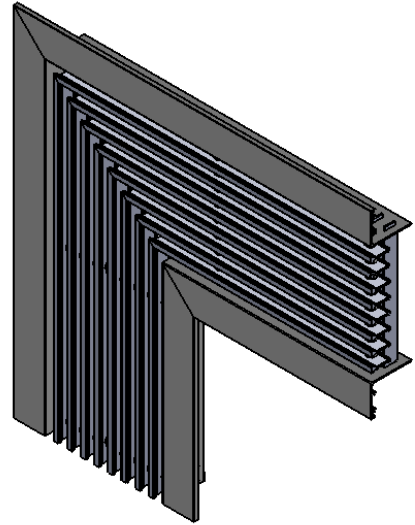
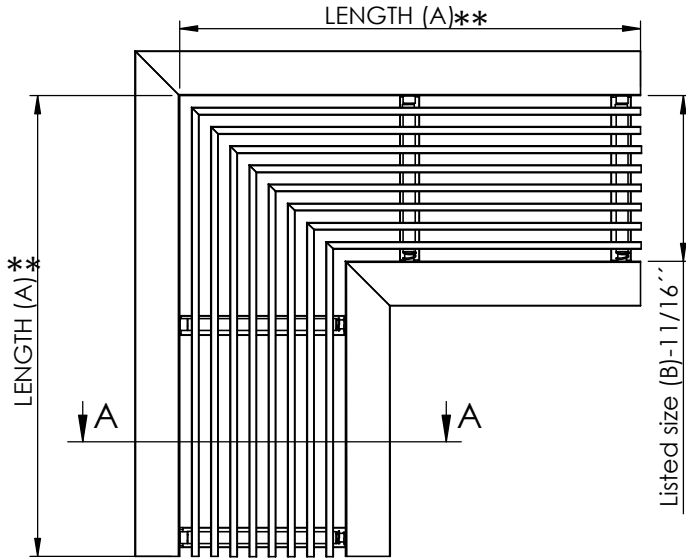
Architect: _____

Engineer: _____

Contractor: _____



CORNER BEAD-90°V- L-BG(*) (Size (B) to 6'')
(Size (B) to 12'')



BLADE DETAIL (C)



0° Deflection 15° Deflection 30° Deflection

NUMBER OF BLADE PER LISTED SIZE

Listed size (inches)	1½	2	2½	3	3½	4	5	6	8	10	12
Number of blade	1	2	3	4	5	6	8	10	14	18	22

** (A)=12''
(A)=24''

Finish
White (Standard)
Other colors (Optional)

Note 1: Available in size (A) 12'' x (B) 1'' to 6''
Available in size (A) 24'' x (B) 6 1/2'' to 12''

0° Deflection
 15° Deflection
 30° Deflection

CORNER BEAD-90°V- L-BG(*)

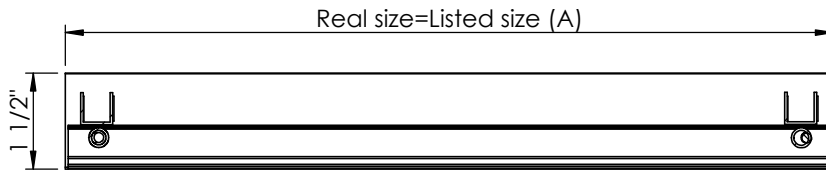
Extrude Aluminum

Job Name: _____
Location: _____

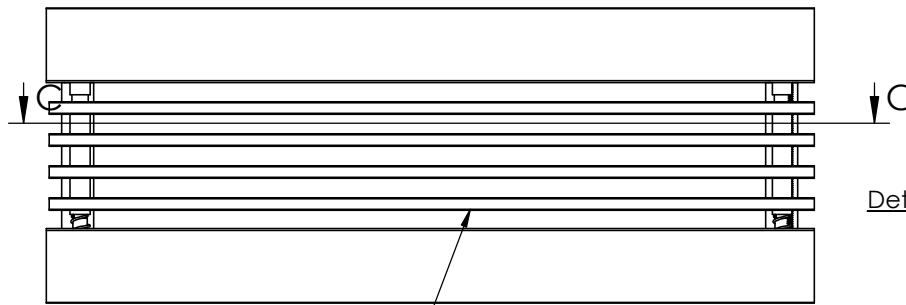
Architect: _____
Engineer: _____
Contractor: _____



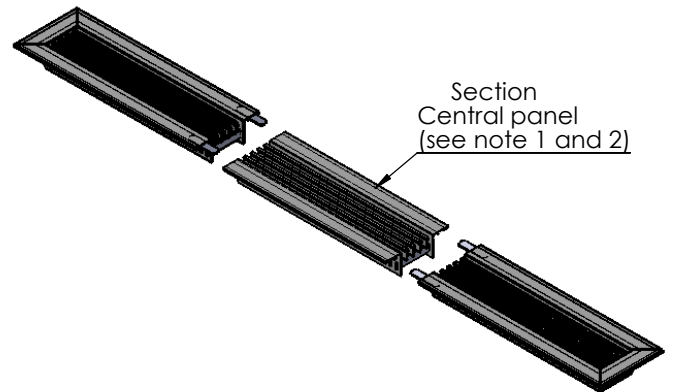
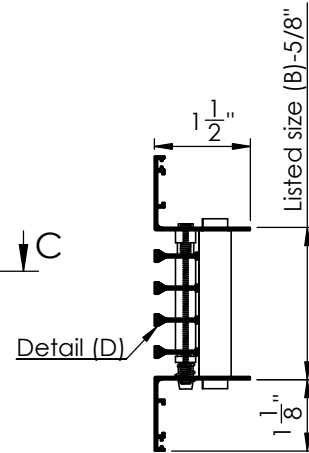
MODEL CENTRAL PANEL L-BG (x)



SECTION C-C
SCALE 1 : 3

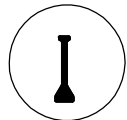


Removable central panel

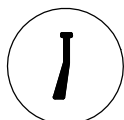


Section
Central panel
(see note 1 and 2)

BLADE DETAIL (D)



(x) 0° Deflection



() 15° Deflection



() 30° Deflection

NUMBER OF BLADE PER LISTED SIZE

Listed size (B) (inches)	1½	2	2½	3	3½	4	5	6	8	10	12
Number of blade	1	2	3	4	5	6	8	10	14	18	22

Note 1: The extent varies according to the dimension of the grating: Listed size (A): (A) > 144"
Listed size (B): 1 1/2" to 12".

Finish
White (Standard)
Other colors (Optional)

Note 2: Maximum length of each section is 72".

- (*) 0° Deflection
- () 15° Deflection
- () 30° Deflection

MODEL CENTRAL PANEL L-BG (x)

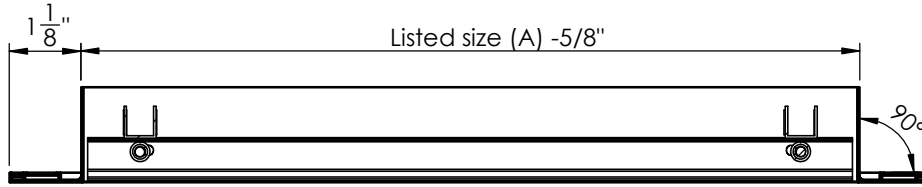
Extrude Aluminum

Job Name: _____
Location: _____

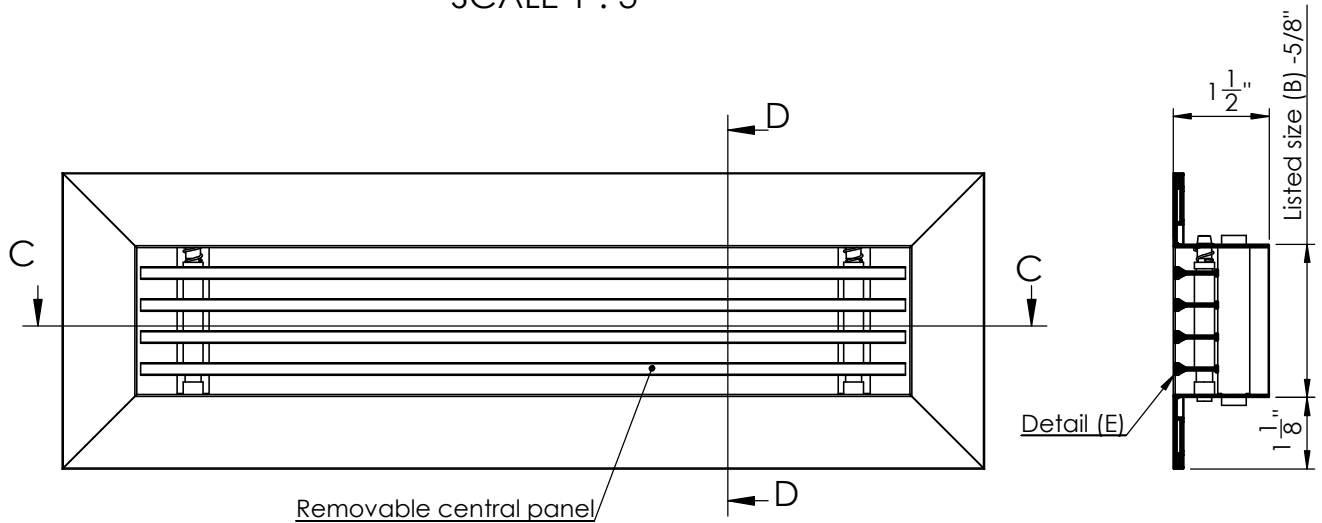
Architect: _____
Engineer: _____
Contractor: _____



MODEL L-BG(×)



SECTION C-C
SCALE 1 : 3

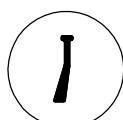


SECTION D-D
SCALE 1 : 3

BLADE DETAIL (E)



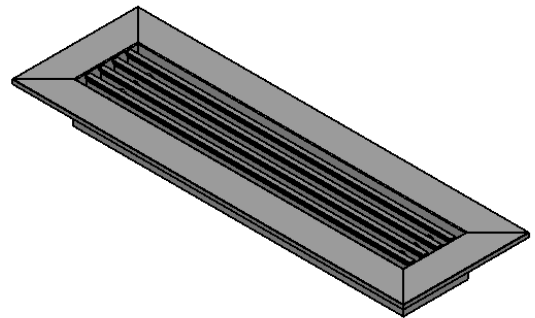
(×) 0° Deflection



() 15° Deflection



() 30° Deflection



NUMBER OF BLADE PER LISTED SIZE

Listed size (B) (inches)	1½	2	2½	3	3½	4	5	6	8	10	12
Number of blade	1	2	3	4	5	6	8	10	14	18	22

Finish
White (Standard)
Other colors (Optional)

Note 1: Real size (A): 12" to 72"
Listed size (B): 1 1/2" to 12"

- (×) 0° Deflection
- () 15° Deflection
- () 30° Deflection

MODEL L-BG-(×)

Extrude Aluminum

Job Name: _____

Architect: _____

Location: _____

Engineer: _____

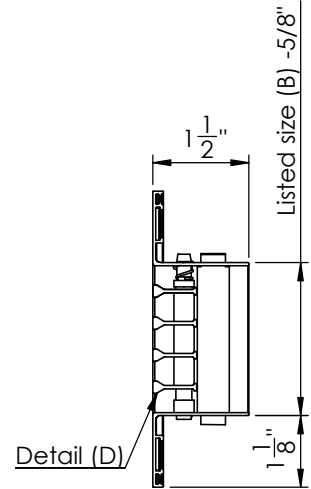
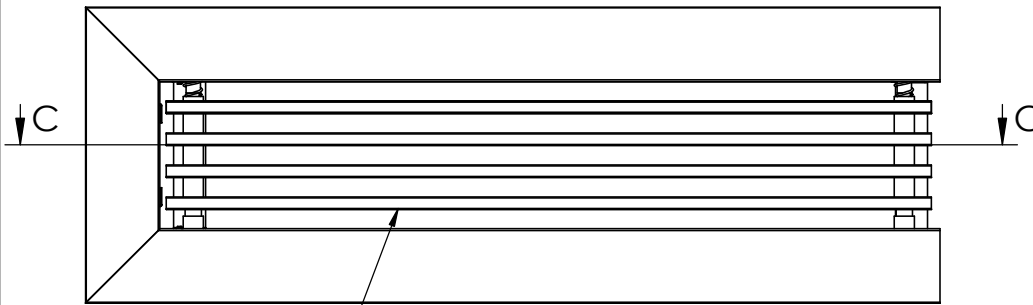
Contractor: _____



MODEL LATERAL L-BG(✕)



SECTION C-C
SCALE 1 : 3

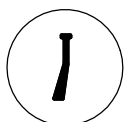


Removable central panel

BLADE DETAIL (D)



(✕) 0° Deflection



() 15° Deflection

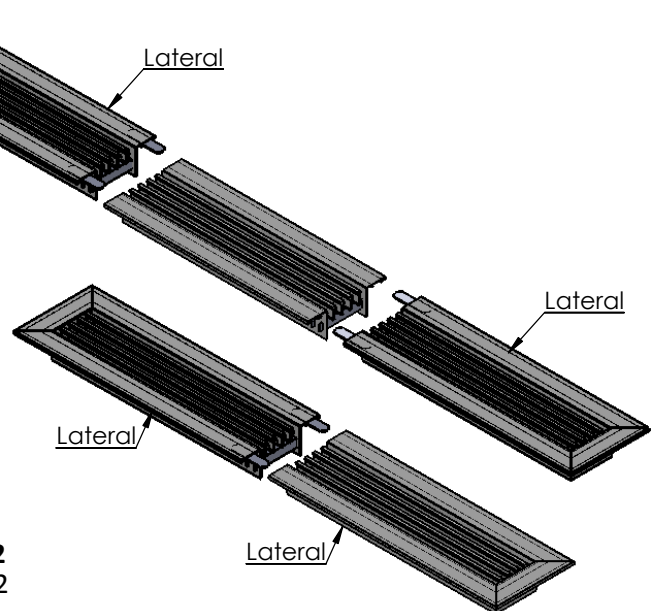


() 30° Deflection

NUMBER OF BLADE PER LISTED SIZE

Listed size (B) (inches)	1½	2	2½	3	3½	4	5	6	8	10	12
Number of blade	1	2	3	4	5	6	8	10	14	18	22

Finish
White (Standard)
Other colors (Optional)



Note 1: Listed size (A): (A) > 72" to 144"
Listed size (B): 1 1/2" to 12"

Note 2: Maximum length of each section is 72".

- (✕) 0° Deflection
- () 15° Deflection
- () 30° Deflection

MODEL LATERAL L-BG (✕)

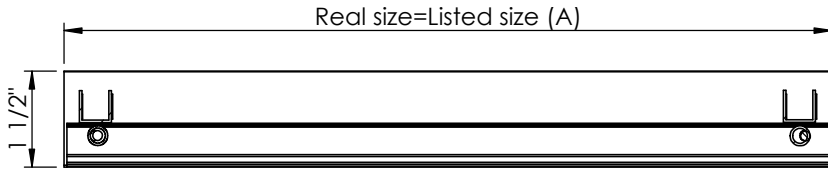
Extrude Aluminum

Job Name: _____
Location: _____

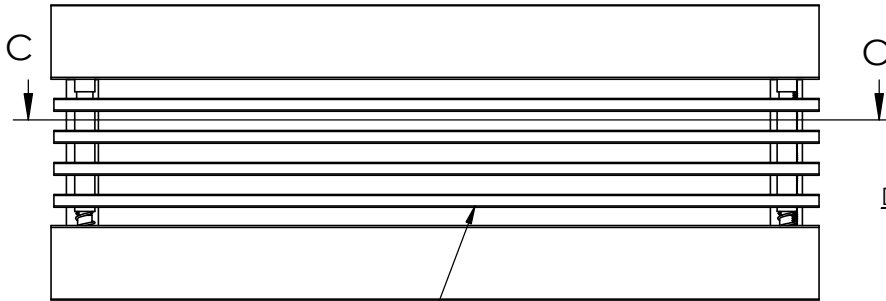
Architect: _____
Engineer: _____
Contractor: _____



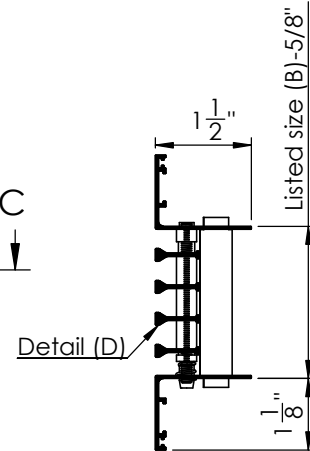
MODEL CENTRAL PANEL L-BG-F(*)



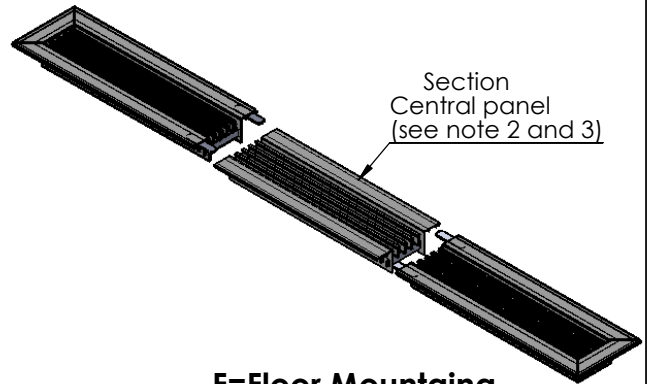
SECTION C-C
SCALE 1 : 3



Removable central panel

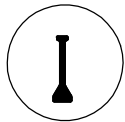


Detail (D)

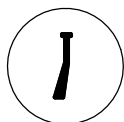


Section Central panel (see note 2 and 3)

BLADE DETAIL (D)



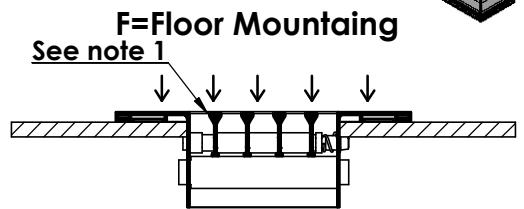
(*) 0° Deflection



() 15° Deflection



() 30° Deflection



NUMBER OF BLADE PER LISTED SIZE

Listed size (B) (inches)	1 1/2	2	2 1/2	3	3 1/2	4	5	6	8	10	12
Number of blade	1	2	3	4	5	6	8	10	14	18	22

Finish
White (Standard)
Other colors (Optional)

Note 1: maximum load 50 l/ft² according to Colombian NSR 2010.

Note 2: The extent varies according to the dimension of the grating: Listed size (A): (A) > 144"
Listed size (B): 1 1/2" to 12".

Note 3: Maximum length of each section is 72".

- (*) 0° Deflection
- () 15° Deflection
- () 30° Deflection

MODEL CENTRAL PANEL L-BG-F (*)

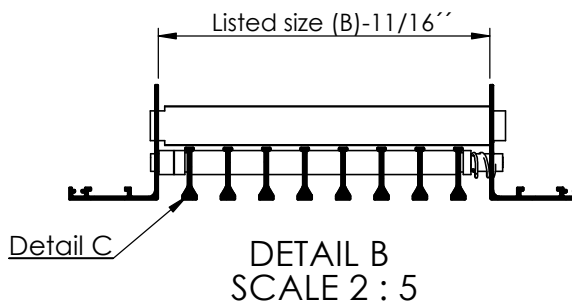
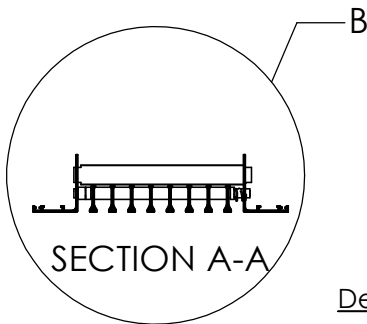
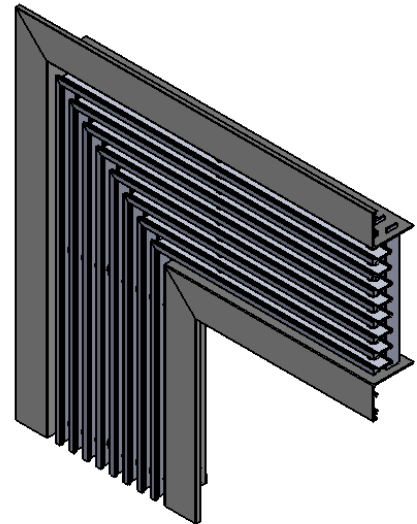
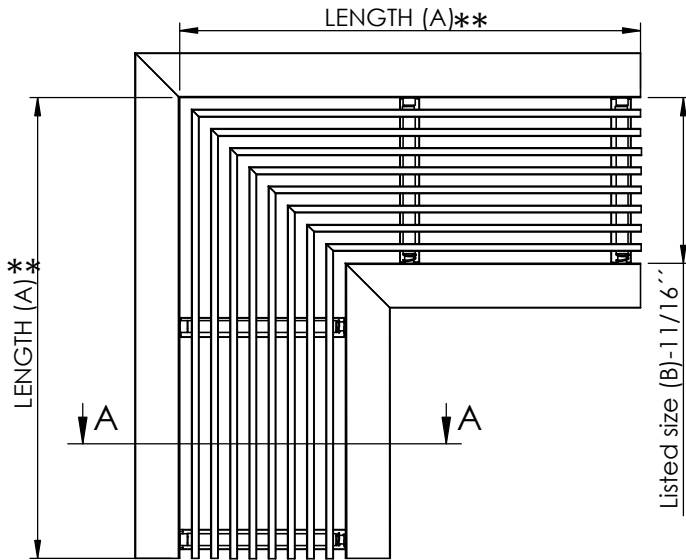
Extrude Aluminum

Job Name: _____
Location: _____

Architect: _____
Engineer: _____
Contractor: _____



CORNER BEAD-90°V- L-BG-F(*) (Size (B) to 6'')
(Size (B) to 12'')



BLADE DETAIL (C)

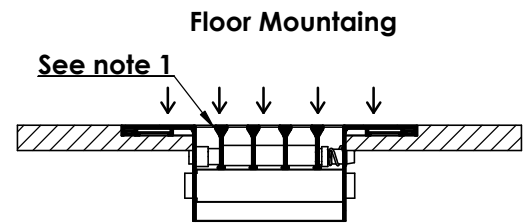


(*) 0° Deflection () 15° Deflection () 30° Deflection

NUMBER OF BLADE PER LISTED SIZE

Listed size (inches)	1½	2	2½	3	3½	4	5	6	8	10	12
Number of blade	1	2	3	4	5	6	8	10	14	18	22

Finish
White (Standard)
Other colors (Optional)



** (A)=12''
(A)=24''

Note 1: Available in size (A) 12'' x (B) 1'' to 6''
Available in size (A) 24'' x (B) 6 1/2'' to 12''

Note 2: maximum load 50 l/ft²
according to Colombian NSR 2010

(*) 0° Deflection
() 15° Deflection
() 30° Deflection

CORNER BEAD-90°V- L-BG-F(*)

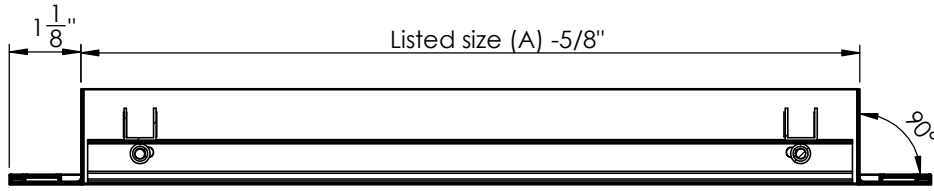
Extrude Aluminum

Job Name: _____
Location: _____

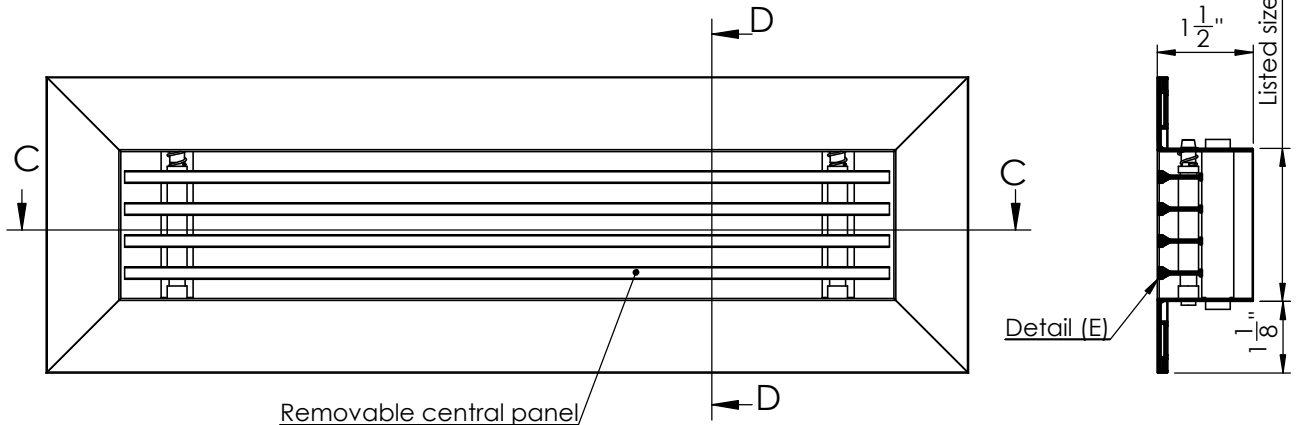
Architect: _____
Engineer: _____
Contractor: _____



MODEL L-BG-F (x)



SECTION C-C
SCALE 1 : 3

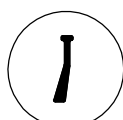


SECTION D-D
SCALE 1 : 3

BLADE DETAIL (E)



(x) 0° Deflection



() 15° Deflection



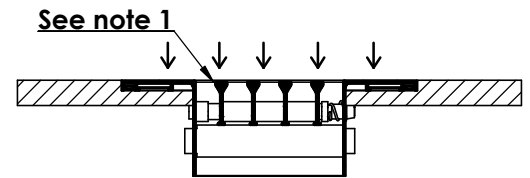
() 30° Deflection

NUMBER OF BLADE PER LISTED SIZE

Listed size (B) (inches)	1½	2	2½	3	3½	4	5	6	8	10	12
Number of blade	1	2	3	4	5	6	8	10	14	18	22

Finish
White (Standard)
Other colors (Optional)

F: Floor Mountaing



Note 1: maximum load 50 l/fp2 according to Colombian NSR 2010

Note 2: Real size (A): 12" to 72"
Listed size (B): 1 1/2" to 12"

- (x) 0° Deflection
- () 15° Deflection
- () 30° Deflection

MODEL L-BG-F (x)

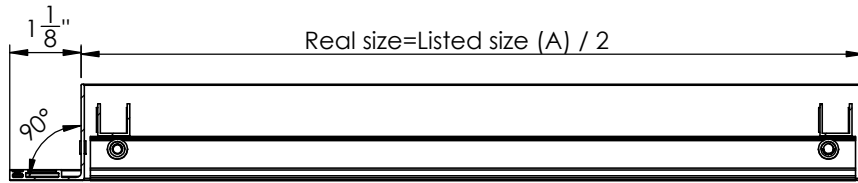
Extrude Aluminum

Job Name: _____
Location: _____

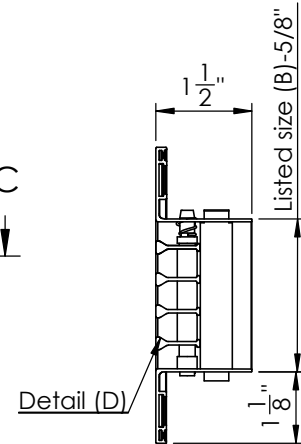
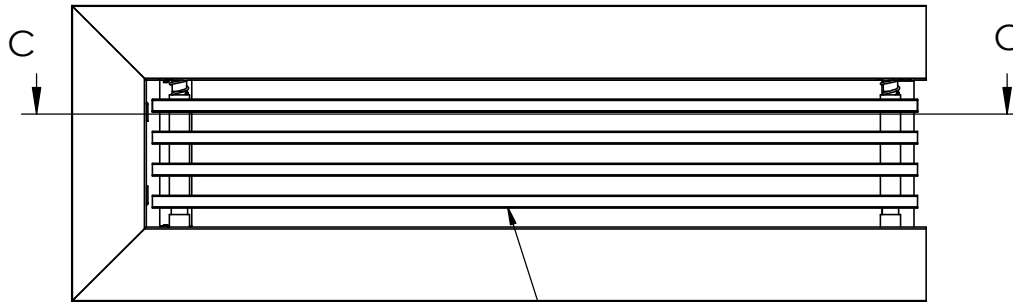
Architect: _____
Engineer: _____
Contractor: _____



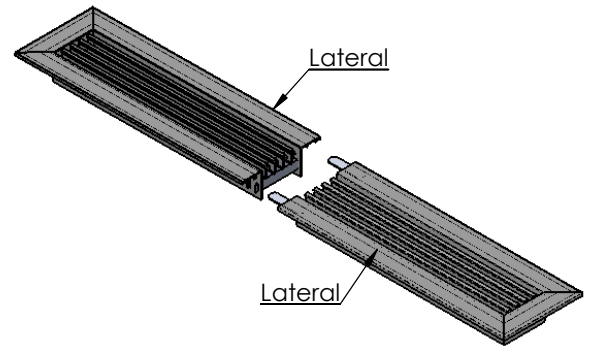
MODEL LATERAL L-BG-F(*)



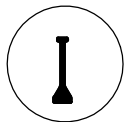
SECTION C-C
SCALE 1 : 3



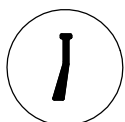
Removable central panel



BLADE DETAIL (D)



(x) 0° Deflection



() 15° Deflection



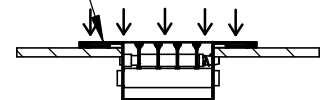
() 30° Deflection

NUMBER OF BLADE PER LISTED SIZE

Listed size (B) (inches)	1½	2	2½	3	3½	4	5	6	8	10	12
Number of blade	1	2	3	4	5	6	8	10	14	18	22

Finish
White (Standard)
Other colors (Optional)

F=Floor Mounting
See note 1



Note 1: maximum load 50 l/ft² according to Colombian NSR 2010

Note 2: Listed size (A): (A) > 72" to 144"
Listed size (B): 1 1/2" to 12"

Note 3: Maximum length of each section is 72".

- (x) 0° Deflection
- () 15° Deflection
- () 30° Deflection

MODEL LATERAL L-BG-F (*)

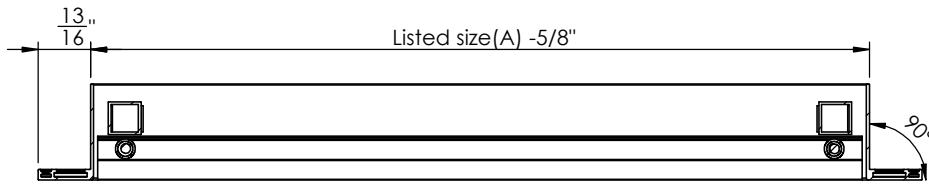
Extrude Aluminum

Job Name: _____
Location: _____

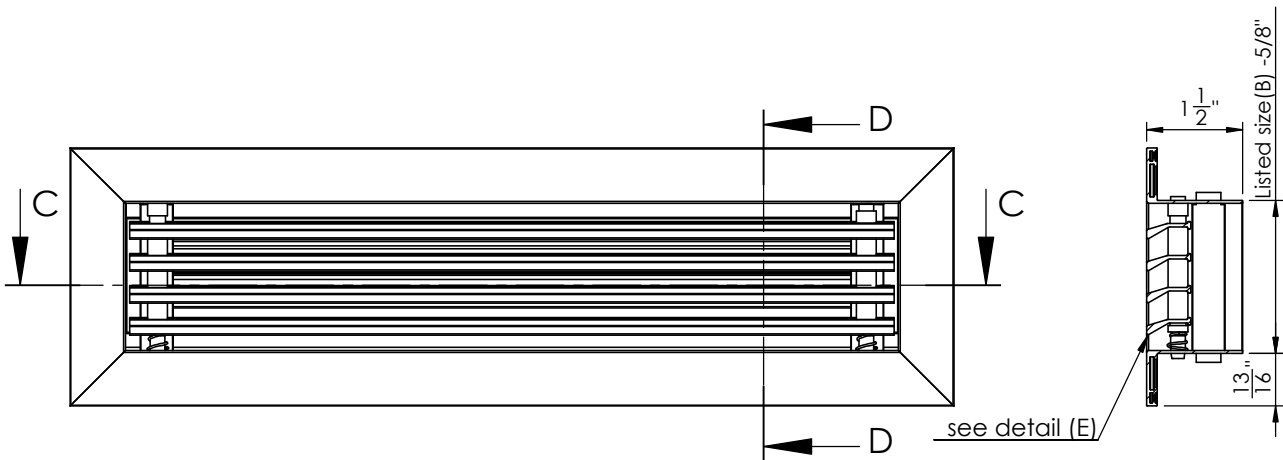
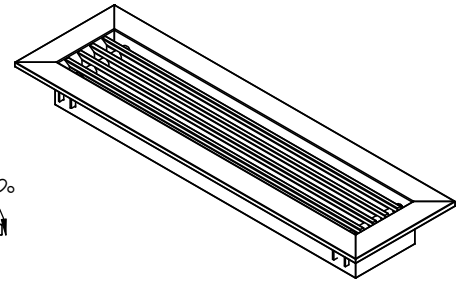
Architect: _____
Engineer: _____
Contractor: _____



MODEL L-BG-N _F (✕)

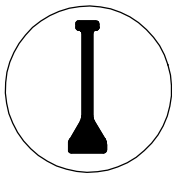


SECTION C-C
SCALE 1 : 3

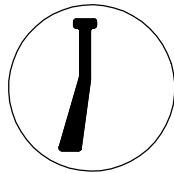


SECTION D-D
SCALE 1 : 3

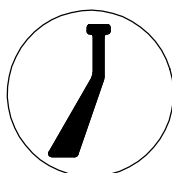
(✕) BLADE DETAIL (E)



() 0° Deflección

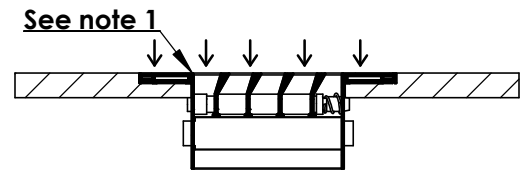


() 15° Deflección



(✕) 30° Deflección

Optional
F=Floor Mounting



Note 1: maximum load 50 l/fp2 according to Colombian NSR 2010

Note 2: Real size (A): 12" to 72"
Listed size (B): 1 1/2" to 12"

Finish
White (Standard)
Other colors (Optional)

MODEL L-BG-N _F (✕)

Extrude Aluminum

Job Name: _____

Architect: _____

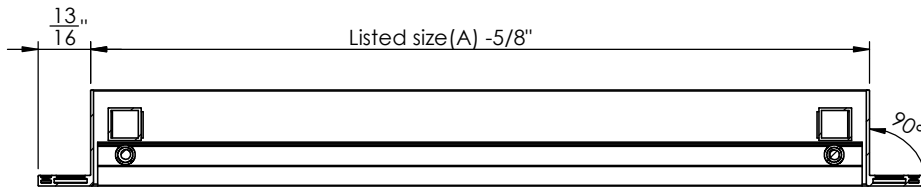
Location: _____

Engineer: _____

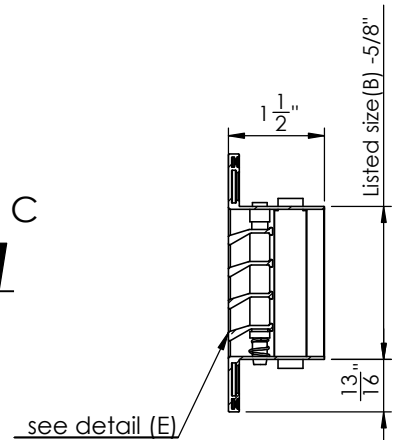
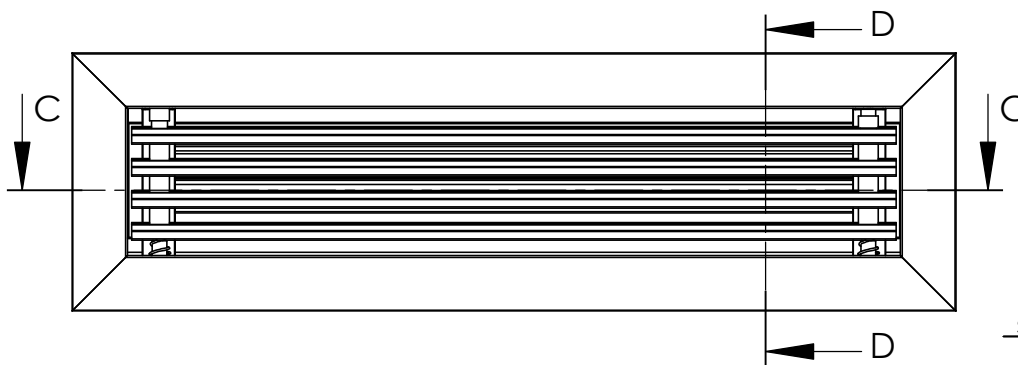
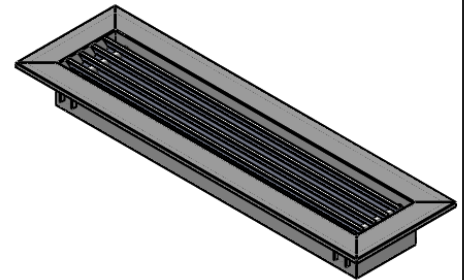
Contractor: _____



MODEL L-BG-N-(*)

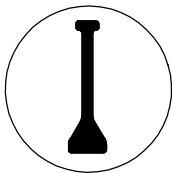


SECTION C-C
SCALE 1 : 3

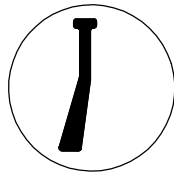


SECTION D-D
SCALE 1 : 3

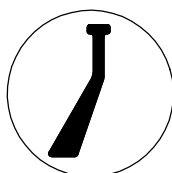
(*) BLADE DETAIL (E)



() 0° Deflección



() 15° Deflección



(*) 30° Deflección

Finish
White (Standard)
Other colors (Optional)

Note 1: Real size (A): 12" to 72"
Listed size (B): 1 1/2" to 12"

MODEL L-BG-N-(*)

Extrude Aluminum

Job Name: _____
Location: _____

Architect: _____
Engineer: _____
Contractor: _____