

INSTALLATION and OPERATION MANUAL



MHNCCW
Multiaqua™




INSTALLATION & OPERATING MANUAL

MHNCCW Fan Coil 1- 3 Tons

----- CAUTION -----

Care must be taken when handling sheet metal. Sheet metal parts have sharp edges and could cause injury.

GENERAL

Read the entire contents of this manual before beginning installation. Multiaqua assumes no responsibility for equipment installed contradictory to any code requirement or installation instructions.

The components of this fan coil have been inspected at the factory and readied for shipment. Upon receiving the shipment a visual inspection of the packaging must be performed.

If any damage to the packaging is discovered, an inspection of the components must be performed and noted on the delivery documents. If component damage is found a damage claim must be filed by the receiving party against the delivery party immediately.

This product is designed and manufactured to permit installation in accordance with national codes. It is the installer's responsibility to install the product in accordance with national codes and/or prevailing local codes and regulations.

Care must be taken to ensure the structural integrity of the supporting members, clearances and provisions for servicing, power supply, coil connections and/or condensate removal. Before the installation ensure the structural strength of the supporting members is sufficient. See **Figure 1** for hanging weights of the fan coils.

This unit is designed to be installed in a horizontal configuration only and into an enclosure assembly. The enclosure assembly is provided by others or field fabricated by the installing contractor.

The coil hand of connection is field reversible. See figures 4-6 for converting the coil hand of connection.

FAN COIL MODEL NUMBER	APPROXIMATED WEIGHTS (LBS)
MHNCCW-04-03	66.0
MHNCCW-06-03	68.2
MHNCCW-08-03	72.6
MHNCCW-10-03	74.8
MHNCCW-12-03	83.6

Figure 1

FAN COIL DIMENSIONS						
Fan Coil Model Number	A	B	C	D	E	F
MHNCCW-04-03	37.72	34.56	31.41	10.00	5.51	21.65
MHNCCW-06-03	37.72	34.56	31.41	10.00	5.51	21.65
MHNCCW-08-03	37.72	34.56	31.41	10.00	5.51	21.65
MHNCCW-10-03	43.70	40.55	37.40	10.00	5.51	21.65
MHNCCW-12-03	49.68	46.53	43.38	10.00	5.51	21.65

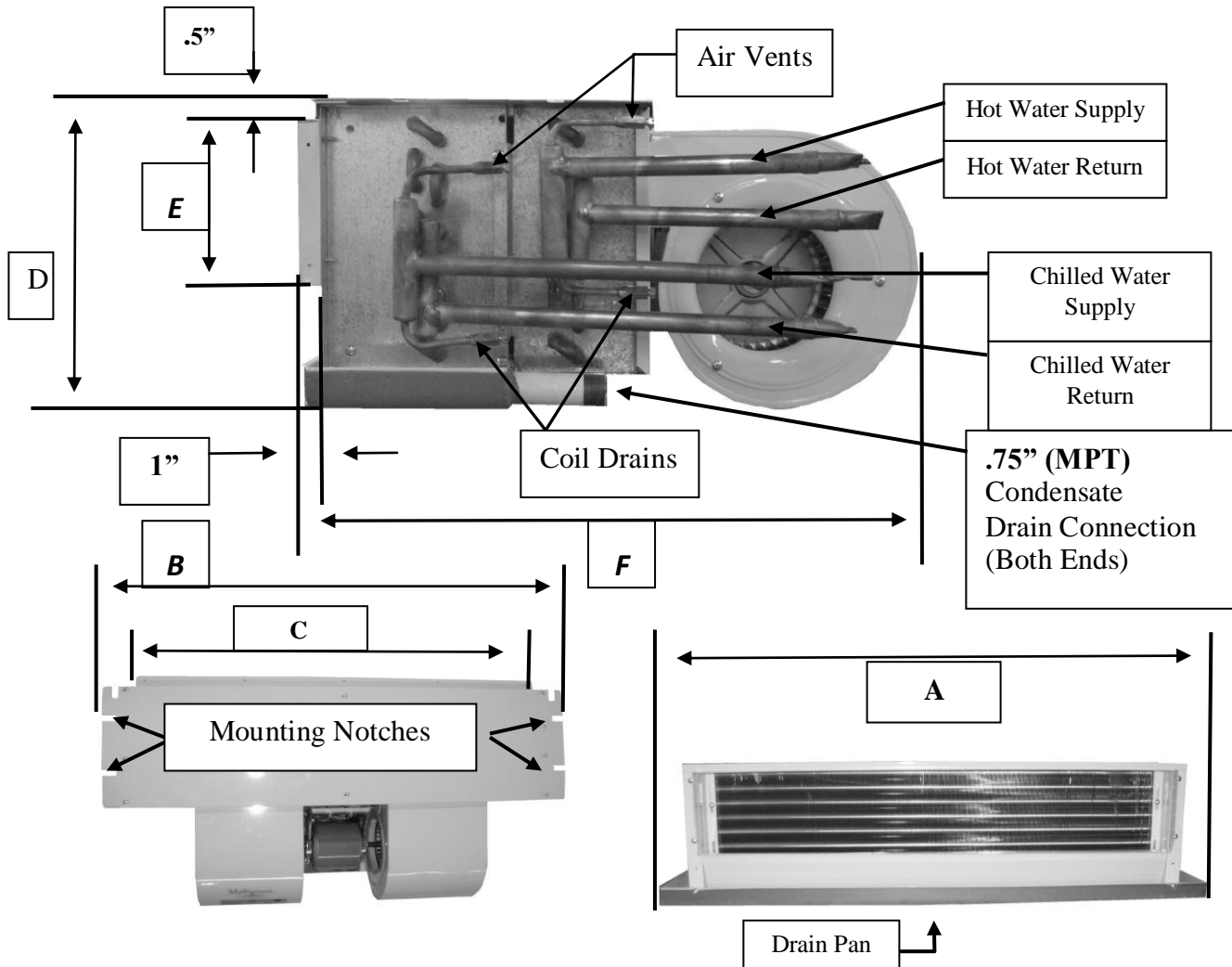


Figure 3

----- CAUTION -----

Care must be taken when handling sheet metal. Sheet metal parts have sharp edges and could cause injury.

INSTRUCTIONS FOR CONVERTING COIL CONNECTION TO LEFT OR RIGHT HAND

1. Remove the eleven screws that attach the top to the fan coil assembly and remove the top.

Figure 4

2. Remove the eight screws that hold the coil into the fan coil frame assembly. There are four screws per side.

Figure 5

3 Slide the coil out of the fan coil frame assembly toward the coil supply and return line connections. Ensure that care is taken when removing and inserting the coil not to damage the coil fins. Insert the coil into the fan coil frame assembly from the other end and reverse procedures 4 & 5 to reassemble the fan coil.

Figure 6

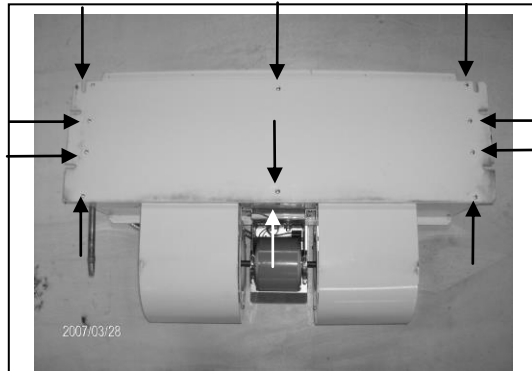


Figure 4

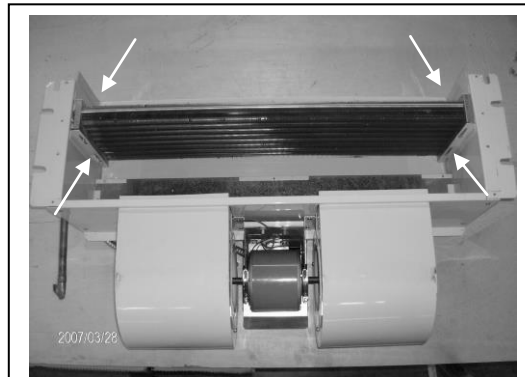


Figure 5

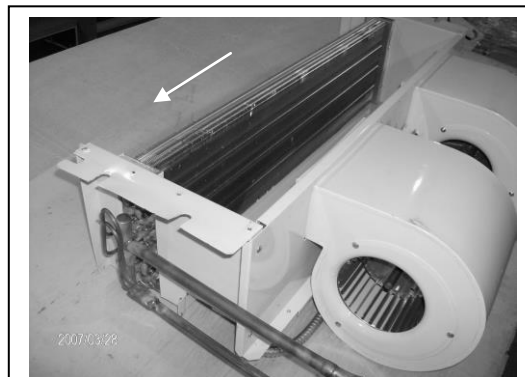


Figure 6