

FXS

STAINLESS STEEL
COOLING TOWER

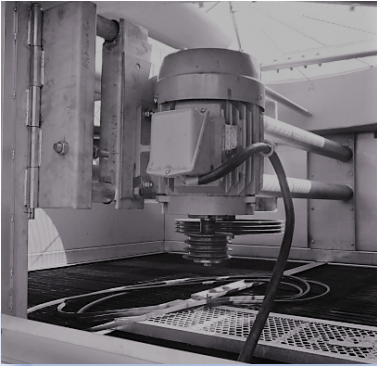


PCT

CTI
CERTIFIED



INDUCED DRAFT COUNTER FLOW

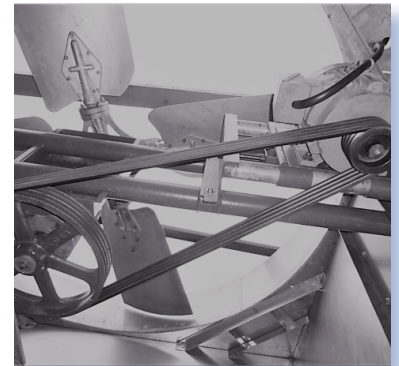


MOTOR

- Totally enclosed motor
- Class F insulation rating 1.15 service factor
- High efficiency
- VFD compatible
- Hinged access door, on larger models, allows for easy maintenance.

FAN

- Belt-driven fan (gear-driven available upon request)
- Adjustable belt
- Corrosion resistant fan blades
- Adjustable pitch to ensure optimum performance
- Aerodynamic shape to minimize noise levels



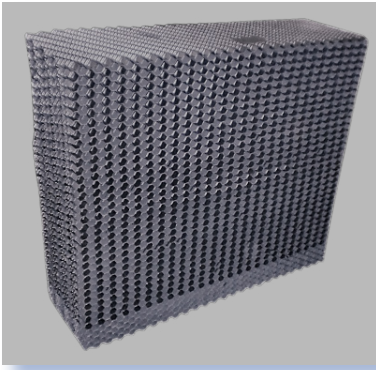
WATER DISTRIBUTION SYSTEM

- Specialty nozzles spray water in square pattern
- Ensures even distribution of water over fill
- Non-corrosive nozzle material
- Large openings to prevent clogging
- Threaded nozzles for easy removal and replacement

CASING & BASIN

- Made of SS304 or SS316 stainless steel panels
- Sloped cold water basin allows for easy drainage and cleaning.
- G235 (Z700) hot-dip galvanized steel is available for casing and basin construction upon request.



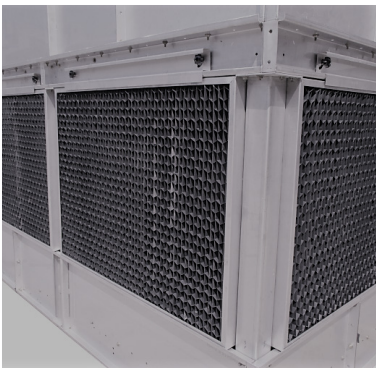
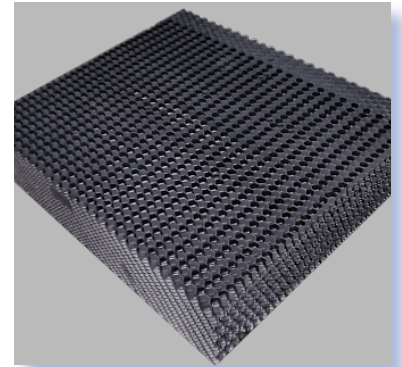


HIGH EFFICIENCY FILL

- High performance PVC fill
- Maximizes air & water contact area
- Minimizes pressure drop
- Suitable for water temperatures up to 130°F

DRIFT ELIMINATOR

- Prevents the escape of water droplets through the airstream
- Guarantees drift loss will be less than 0.005% of the recirculating water flow rate
- Constructed of inert PVC to eliminate corrosion



AIR INLET LOUVER

- Honeycomb configured air intake channels
- PVC construction prevents water from escaping and sunlight from entering
- Easily removable for quick access to basin and routine maintenance

SERVICEABILITY

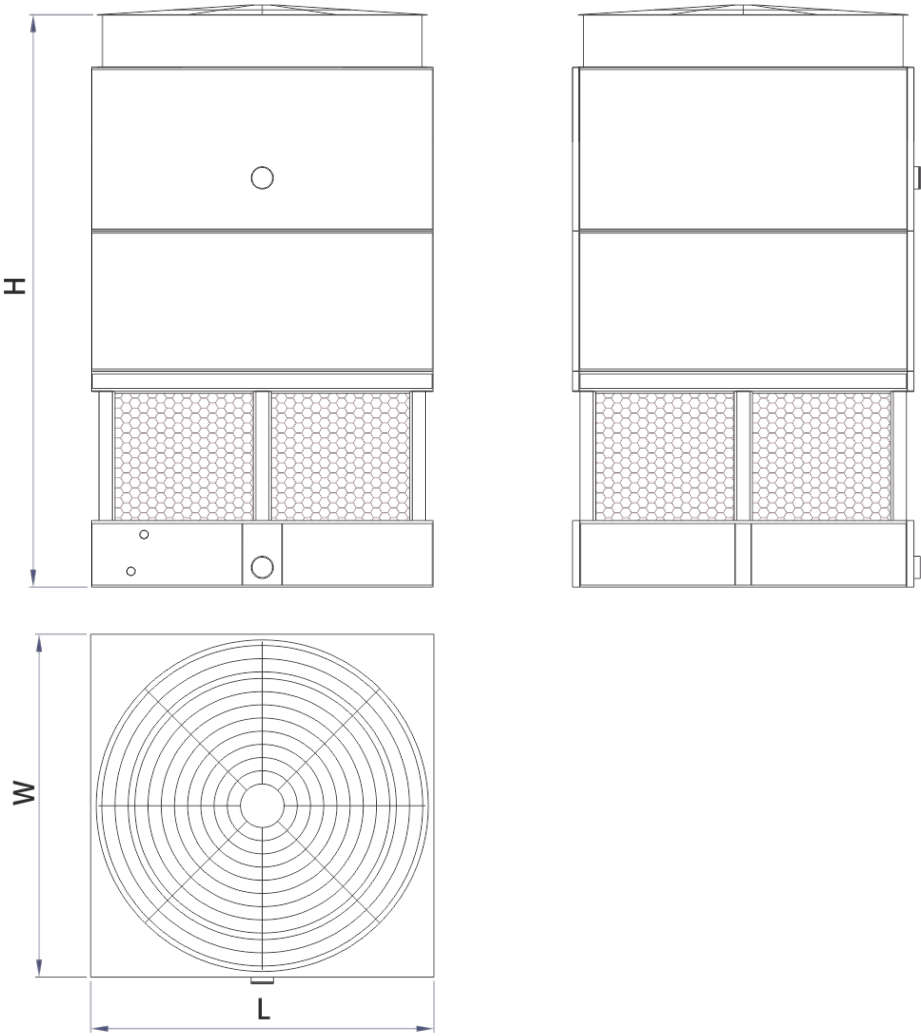
- Vertical maintenance ladder
- Working platform for easy access to fan, motor, and water distribution system
- Motor davit available upon request



FIVE YEAR WARRANTY

Includes fans, fan shafts, bearing sheaves, and drive shafts

TOWER SCHEMATIC



NOMENCLATURE

FXS - ##### # # X

		Number of Fans & Motors	Horsepower Code
	Basin Size	Height Designator	

ENGINEERING DATA & DIMENSIONS

Model	Dimension			Nominal gpm (see note 3)	Fan Dia	Motor HP	Piping				
	W	L	H				Inlet	Outlet	Float Valve	Over Flow	Drain
FXS-182612I	5'11"	8'7"	12'11"	277	5'- 3"	3	6"	6"	1"	2"	2"
FXS-182612J	5'11"	8'7"	12'11"	334	5'- 3"	5	6"	6"	1"	2"	2"
FXS-182612K	5'11"	8'7"	12'11"	376	5'- 3"	7.5	6"	6"	1"	2"	2"
FXS-182612L	5'11"	8'7"	12'11"	410	5'- 3"	10	6"	6"	1"	2"	2"
FXS-182613I	5'11"	8'7"	14'8"	310	5'- 3"	3	6"	6"	1"	2"	2"
FXS-182613J	5'11"	8'7"	14'8"	363	5'- 3"	5	6"	6"	1"	2"	2"
FXS-182613K	5'11"	8'7"	14'8"	412	5'- 3"	7.5	6"	6"	1"	2"	2"
FXS-182613L	5'11"	8'7"	14'8"	450	5'- 3"	10	6"	6"	1"	2"	2"
FXS-182613M	5'11"	8'7"	14'8"	503	5'- 3"	15	6"	6"	1"	2"	2"
FXS-182614I	5'11"	8'7"	15'7"	317	5'- 3"	3	6"	6"	1"	2"	2"
FXS-182614J	5'11"	8'7"	15'7"	374	5'- 3"	5	6"	6"	1"	2"	2"
FXS-182614K	5'11"	8'7"	15'7"	419	5'- 3"	7.5	6"	6"	1"	2"	2"
FXS-182614L	5'11"	8'7"	15'7"	461	5'- 3"	10	6"	6"	1"	2"	2"
FXS-182614M	5'11"	8'7"	15'7"	510	5'- 3"	15	6"	6"	1"	2"	2"
FXS-222812J	7'3"	9'3"	12'11"	354	6'- 7"	5	6"	6"	1"	2"	2"
FXS-222812K	7'3"	9'3"	12'11"	407	6'- 7"	7.5	6"	6"	1"	2"	2"
FXS-222812L	7'3"	9'3"	12'11"	449	6'- 7"	10	6"	6"	1"	2"	2"
FXS-222812M	7'3"	9'3"	12'11"	506	6'- 7"	15	6"	6"	1"	2"	2"
FXS-222813J	7'3"	9'3"	14'8"	391	6'- 7"	5	6"	6"	1"	2"	2"
FXS-222813K	7'3"	9'3"	14'8"	448	6'- 7"	7.5	6"	6"	1"	2"	2"
FXS-222813L	7'3"	9'3"	14'8"	497	6'- 7"	10	6"	6"	1"	2"	2"
FXS-222813M	7'3"	9'3"	14'8"	565	6'- 7"	15	6"	6"	1"	2"	2"
FXS-222813N	7'3"	9'3"	14'8"	626	6'- 7"	20	6"	6"	1"	2"	2"
FXS-222814J	7'3"	9'3"	15'7"	416	6'- 7"	5	6"	6"	1"	2"	2"
FXS-222814K	7'3"	9'3"	15'7"	473	6'- 7"	7.5	6"	6"	1"	2"	2"
FXS-222814L	7'3"	9'3"	15'7"	519	6'- 7"	10	6"	6"	1"	2"	2"
FXS-222814M	7'3"	9'3"	15'7"	591	6'- 7"	15	6"	6"	1"	2"	2"
FXS-222814N	7'3"	9'3"	15'7"	647	6'- 7"	20	6"	6"	1"	2"	2"
FXS-262812J	8'7"	9'3"	13'3"	422	7'- 10"	5	6"	6"	1"	2"	2"
FXS-262812K	8'7"	9'3"	13'3"	490	7'- 10"	7.5	6"	6"	1"	2"	2"

NOTES:

1. Cooling tower shall be installed away from the outside air intake of the building.
2. Do not use catalog drawings for certified prints. Dimensions and weights are subject to change. Obtain current drawings from sales representative.
3. Nominal gpm is based on 3 gpm per ton at 95°F entering water temperature, 85°F leaving water temperature, and 78°F wet-bulb temperature.
4. Adequate spacing must be provided to allow for easy access and maintenance to the cooling tower.

ENGINEERING DATA & DIMENSIONS

Model	Dimension			Nominal gpm (see note 3)	Fan Dia	Motor HP	Piping				
	W	L	H				Inlet	Outlet	Float Valve	Over Flow	Drain
FXS-262812L	8'7"	9'3"	13'3"	540	7'- 10"	10	6"	6"	1"	2"	2"
FXS-262812M	8'7"	9'3"	13'3"	616	7'- 10"	15	6"	6"	1"	2"	2"
FXS-262813J	8'7"	9'3"	13'3"	466	7'- 10"	5	6"	6"	1"	2"	2"
FXS-262813K	8'7"	9'3"	15'0"	534	7'- 10"	7.5	6"	6"	1"	2"	2"
FXS-262813L	8'7"	9'3"	15'0"	584	7'- 10"	10	6"	6"	1"	2"	2"
FXS-262813M	8'7"	9'3"	15'0"	675	7'- 10"	15	6"	6"	1"	2"	2"
FXS-262813N	8'7"	9'3"	15'0"	731	7'- 10"	20	6"	6"	1"	2"	2"
FXS-262814J	8'7"	9'3"	15'11"	480	7'- 10"	5	6"	6"	1"	2"	2"
FXS-262814K	8'7"	9'3"	15'11"	549	7'- 10"	7.5	6"	6"	1"	2"	2"
FXS-262814L	8'7"	9'3"	15'11"	602	7'- 10"	10	6"	6"	1"	2"	2"
FXS-262814M	8'7"	9'3"	15'11"	689	7'- 10"	15	6"	8"	1"	2"	2"
FXS-262814N	8'7"	9'3"	15'11"	764	7'- 10"	20	6"	8"	1-1/2"	3"	2"
FXS-263212J	8'7"	10'6"	13'3"	479	7'- 10"	5	6"	8"	1"	2"	2"
FXS-263212K	8'7"	10'6"	13'3"	566	7'- 10"	7.5	6"	8"	1"	2"	2"
FXS-263212L	8'7"	10'6"	13'3"	608	7'- 10"	10	6"	8"	1"	2"	2"
FXS-263212M	8'7"	10'6"	13'3"	684	7'- 10"	15	6"	8"	1"	2"	2"
FXS-263213J	8'7"	10'6"	15'0"	511	7'- 10"	5	6"	8"	1"	2"	2"
FXS-263213K	8'7"	10'6"	15'0"	591	7'- 10"	7.5	6"	8"	1"	2"	2"
FXS-263213L	8'7"	10'6"	15'0"	648	7'- 10"	10	6"	8"	1"	2"	2"
FXS-263213M	8'7"	10'6"	15'0"	742	7'- 10"	15	8"	8"	1-1/2"	3"	2"
FXS-263213N	8'7"	10'6"	15'0"	822	7'- 10"	20	8"	8"	1-1/2"	3"	2"
FXS-263214J	8'7"	10'6"	15'11"	552	7'- 10"	5	6"	8"	1"	2"	2"
FXS-263214K	8'7"	10'6"	15'11"	631	7'- 10"	7.5	6"	8"	1"	2"	2"
FXS-263214L	8'7"	10'6"	15'11"	680	7'- 10"	10	6"	8"	1"	2"	2"
FXS-263214M	8'7"	10'6"	15'11"	782	7'- 10"	15	8"	8"	1-1/2"	3"	2"
FXS-263214N	8'7"	10'6"	15'11"	858	7'- 10"	20	8"	8"	1-1/2"	3"	2"
FXS-263214O	8'7"	10'6"	15'11"	907	7'- 10"	25	8"	8"	2"	3"	2"
FXS-263612K	8'7"	11'10"	13'3"	619	7'- 10"	7.5	8"	8"	1"	2"	2"
FXS-263612L	8'7"	11'10"	13'3"	691	7'- 10"	10	8"	8"	1"	2"	2"
FXS-263612M	8'7"	11'10"	13'3"	778	7'- 10"	15	8"	8"	1-1/2"	3"	2"

NOTES:

1. Cooling tower shall be installed away from the outside air intake of the building.
2. Do not use catalog drawings for certified prints. Dimensions and weights are subject to change. Obtain current drawings from sales representative.
3. Nominal gpm is based on 3 gpm per ton at 95°F entering water temperature, 85°F leaving water temperature, and 78°F wet-bulb temperature.
4. Adequate spacing must be provided to allow for easy access and maintenance to the cooling tower.

ENGINEERING DATA & DIMENSIONS

Model	Dimension			Nominal gpm (see note 3)	Fan Dia	Motor HP	Piping				
	W	L	H				Inlet	Outlet	Float Valve	Over Flow	Drain
FXS-263612N	8'7"	11'10"	13'3"	850	7'- 10"	20	8"	8"	1-1/2"	3"	2"
FXS-263613K	8'7"	11'10"	15'0"	677	7'- 10"	7.5	8"	8"	1"	2"	2"
FXS-263613L	8'7"	11'10"	15'0"	749	7'- 10"	10	8"	8"	1"	2"	2"
FXS-263613M	8'7"	11'10"	15'0"	839	7'- 10"	15	8"	8"	1-1/2"	3"	2"
FXS-263613N	8'7"	11'10"	15'0"	930	7'- 10"	20	8"	8"	2"	3"	2"
FXS-263613O	8'7"	11'10"	15'0"	987	7'- 10"	25	8"	8"	2"	3"	2"
FXS-263614K	8'7"	11'10"	15'11"	698	7'- 10"	7.5	8"	8"	1-1/2"	2"	2"
FXS-263614L	8'7"	11'10"	15'11"	770	7'- 10"	10	8"	8"	1-1/2"	3"	2"
FXS-263614M	8'7"	11'10"	15'11"	857	7'- 10"	15	8"	8"	2"	3"	2"
FXS-263614N	8'7"	11'10"	15'11"	955	7'- 10"	20	8"	8"	2"	3"	2"
FXS-263614O	8'7"	11'10"	15'11"	1019	7'- 10"	25	8"	8"	2"	3"	2"
FXS-263614P	8'7"	11'10"	15'11"	1057	7'- 10"	30	8"	8"	2"	3"	2"
FXS-303612L	9'11"	11'10"	14'0"	692	9'- 2"	10	8"	8"	1-1/2"	3"	2"
FXS-303612M	9'11"	11'10"	14'0"	813	9'- 2"	15	8"	8"	1-1/2"	3"	2"
FXS-303612N	9'11"	11'10"	14'0"	893	9'- 2"	20	8"	8"	2"	3"	2"
FXS-303612O	9'11"	11'10"	14'0"	954	9'- 2"	25	8"	8"	2"	3"	2"
FXS-303612P	9'11"	11'10"	14'0"	1003	9'- 2"	30	8"	8"	2"	3"	2"
FXS-303613L	9'11"	11'10"	15'3"	784	9'- 2"	10	8"	8"	2"	3"	2"
FXS-303613M	9'11"	11'10"	15'3"	897	9'- 2"	15	8"	8"	2"	3"	2"
FXS-303613N	9'11"	11'10"	15'3"	980	9'- 2"	20	8"	8"	2"	3"	2"
FXS-303613O	9'11"	11'10"	15'3"	1052	9'- 2"	25	8"	8"	2"	3"	2"
FXS-303613P	9'11"	11'10"	15'3"	1109	9'- 2"	30	8"	10"	2"	3"	2"
FXS-303614L	9'11"	11'10"	16'3"	802	9'- 2"	10	8"	10"	2"	3"	2"
FXS-303614M	9'11"	11'10"	16'3"	919	9'- 2"	15	8"	10"	2"	3"	2"
FXS-303614N	9'11"	11'10"	16'3"	1006	9'- 2"	20	8"	10"	2"	3"	2"
FXS-303614O	9'11"	11'10"	16'3"	1078	9'- 2"	25	8"	10"	2"	3"	2"
FXS-303614P	9'11"	11'10"	16'3"	1138	9'- 2"	30	8"	10"	2"	3"	2"
FXS-303614Q	9'11"	11'10"	16'3"	1221	9'- 2"	40	8"	10"	2"	3"	2"
FXS-343812L	11'2"	12'6"	14'0"	850	9'- 10"	10	8"	10"	2"	3"	2"
FXS-343812M	11'2"	12'6"	14'0"	982	9'- 10"	15	8"	10"	2"	3"	2"

NOTES:

1. Cooling tower shall be installed away from the outside air intake of the building.
2. Do not use catalog drawings for certified prints. Dimensions and weights are subject to change. Obtain current drawings from sales representative.
3. Nominal gpm is based on 3 gpm per ton at 95°F entering water temperature, 85°F leaving water temperature, and 78°F wet-bulb temperature.
4. Adequate spacing must be provided to allow for easy access and maintenance to the cooling tower.

ENGINEERING DATA & DIMENSIONS

Model	Dimension			Nominal gpm (see note 3)	Fan Dia	Motor HP	Piping				
	W	L	H				Inlet	Outlet	Float Valve	Over Flow	Drain
FXS-343812N	11'2"	12'6"	14'0"	1077	9'- 10"	20	8"	10"	2"	3"	2"
FXS-343812O	11'2"	12'6"	14'0"	1153	9'- 10"	25	8"	10"	2"	3"	2"
FXS-343812P	11'2"	12'6"	14'0"	1218	9'- 10"	30	8"	10"	2"	3"	2"
FXS-343813L	11'2"	12'6"	15'8"	933	9'- 10"	10	8"	10"	2"	3"	2"
FXS-343813M	11'2"	12'6"	15'8"	1073	9'- 10"	15	8"	10"	2"	3"	2"
FXS-343813N	11'2"	12'6"	15'8"	1171	9'- 10"	20	8"	10"	2"	3"	2"
FXS-343813O	11'2"	12'6"	15'8"	1262	9'- 10"	25	8"	10"	2"	3"	2"
FXS-343813P	11'2"	12'6"	15'8"	1334	9'- 10"	30	8"	10"	2"	3"	2"
FXS-343814L	11'2"	12'6"	16'8"	973	9'- 10"	10	8"	10"	2"	3"	2"
FXS-343814M	11'2"	12'6"	16'8"	1105	9'- 10"	15	8"	10"	2"	3"	2"
FXS-343814N	11'2"	12'6"	16'8"	1211	9'- 10"	20	8"	10"	2"	3"	2"
FXS-343814O	11'2"	12'6"	16'8"	1305	9'- 10"	25	8"	10"	2"	3"	2"
FXS-343814P	11'2"	12'6"	16'8"	1384	9'- 10"	30	8"	10"	2"	3"	2"
FXS-343814Q	11'2"	12'6"	16'8"	1509	9'- 10"	40	8"	10"	2"	3"	2"
FXS-184022I	5'11"	13'2"	13'3"	449	5'- 3"	3x2	4"x2	6"	1"	2"	2"
FXS-184022J	5'11"	13'2"	13'3"	521	5'- 3"	5x2	4"x2	6"	1"	2"	2"
FXS-184022K	5'11"	13'2"	13'3"	582	5'- 3"	7.5x2	4"x2	6"	1"	2"	2"
FXS-184022L	5'11"	13'2"	13'3"	635	5'- 3"	10x2	4"x2	6"	1"	2"	2"
FXS-184023I	5'11"	13'2"	15'0"	474	5'- 3"	3x2	4"x2	6"	1"	2"	2"
FXS-184023J	5'11"	13'2"	15'0"	554	5'- 3"	5x2	4"x2	6"	1"	2"	2"
FXS-184023K	5'11"	13'2"	15'0"	622	5'- 3"	7.5x2	4"x2	8"	1"	2"	2"
FXS-184023L	5'11"	13'2"	15'0"	679	5'- 3"	10x2	4"x2	8"	1-1/2"	3"	2"
FXS-184023M	5'11"	13'2"	15'0"	755	5'- 3"	15x2	4"x2	8"	1-1/2"	3"	2"
FXS-184024I	5'11"	13'2"	15'11"	492	5'- 3"	3x2	4"x2	6"	1"	2"	2"
FXS-184024J	5'11"	13'2"	15'11"	572	5'- 3"	5x2	4"x2	6"	1"	2"	2"
FXS-184024K	5'11"	13'2"	15'11"	644	5'- 3"	7.5x2	4"x2	8"	1"	2"	2"
FXS-184024L	5'11"	13'2"	15'11"	701	5'- 3"	10x2	4"x2	8"	1-1/2"	3"	2"
FXS-184024M	5'11"	13'2"	15'11"	784	5'- 3"	15x2	6"x2	8"	1-1/2"	3"	2"
FXS-224422J	7'3"	14'6"	13'3"	639	6'- 7"	5x2	6"x2	8"	1"	2"	2"
FXS-224422K	7'3"	14'6"	13'3"	719	6'- 7"	7.5x2	6"x2	8"	1"	2"	2"

NOTES:

1. Cooling tower shall be installed away from the outside air intake of the building.
2. Do not use catalog drawings for certified prints. Dimensions and weights are subject to change. Obtain current drawings from sales representative.
3. Nominal gpm is based on 3 gpm per ton at 95°F entering water temperature, 85°F leaving water temperature, and 78°F wet-bulb temperature.
4. Adequate spacing must be provided to allow for easy access and maintenance to the cooling tower.

ENGINEERING DATA & DIMENSIONS

Model	Dimension			Nominal gpm (see note 3)	Fan Dia	Motor HP	Piping				
	W	L	H				Inlet	Outlet	Float Valve	Over Flow	Drain
FXS-224422L	7'3"	14'6"	13'3"	780	6'- 7"	10x2	6"x2	8"	1"	2"	2"
FXS-224422M	7'3"	14'6"	13'3"	871	6'- 7"	15x2	6"x2	8"	1-1/2"	3"	2"
FXS-224423J	7'3"	14'6"	15'0"	683	6'- 7"	5x2	6"x2	8"	1"	2"	2"
FXS-224423K	7'3"	14'6"	15'0"	774	6'- 7"	7.5x2	6"x2	8"	1"	2"	2"
FXS-224423L	7'3"	14'6"	15'0"	839	6'- 7"	10x2	6"x2	8"	1-1/2"	3"	2"
FXS-224423M	7'3"	14'6"	15'0"	937	6'- 7"	15x2	6"x2	8"	1-1/2"	3"	2"
FXS-224423N	7'3"	14'6"	15'0"	1025	6'- 7"	20x2	6"x2	8"	2"	3"	2"
FXS-224424J	7'3"	14'6"	15'11"	716	6'- 7"	5x2	6"x2	8"	1-1/2"	3"	2"
FXS-224424K	7'3"	14'6"	15'11"	803	6'- 7"	7.5x2	6"x2	8"	1-1/2"	3"	2"
FXS-224424L	7'3"	14'6"	15'11"	875	6'- 7"	10x2	6"x2	8"	1-1/2"	3"	2"
FXS-224424M	7'3"	14'6"	15'11"	981	6'- 7"	15x2	6"x2	8"	2"	3"	2"
FXS-224424N	7'3"	14'6"	15'11"	1064	6'- 7"	20x2	6"x2	8"	2"	3"	2"
FXS-265022J	8'7"	16'5"	13'6"	791	7'- 10"	5x2	6"x2	8"	2"	3"	2"
FXS-265022K	8'7"	16'5"	13'6"	883	7'- 10"	7.5x2	6"x2	8"	2"	3"	2"
FXS-265022L	8'7"	16'5"	13'6"	966	7'- 10"	10x2	6"x2	8"	2"	3"	2"
FXS-265022M	8'7"	16'5"	13'6"	1073	7'- 10"	15x2	6"x2	8"	2"	3"	3"
FXS-265023J	8'7"	16'5"	15'4"	842	7'- 10"	5x2	6"x2	8"	2"	3"	2"
FXS-265023K	8'7"	16'5"	15'4"	945	7'- 10"	7.5x2	6"x2	8"	2"	3"	2"
FXS-265023L	8'7"	16'5"	15'4"	1036	7'- 10"	10x2	6"x2	8"	2"	3"	3"
FXS-265023M	8'7"	16'5"	15'4"	1154	7'- 10"	15x2	6"x2	10"	2"	3"	3"
FXS-265023N	8'7"	16'5"	15'4"	1256	7'- 10"	20x2	6"x2	10"	2"	3"	3"
FXS-265024J	8'7"	16'5"	16'8"	883	7'- 10"	5x2	6"x2	8"	2"	3"	2"
FXS-265024K	8'7"	16'5"	16'8"	989	7'- 10"	7.5x2	6"x2	8"	2"	3"	2"
FXS-265024L	8'7"	16'5"	16'8"	1083	7'- 10"	10x2	6"x2	10"	2"	3"	3"
FXS-265024M	8'7"	16'5"	16'8"	1208	7'- 10"	15x2	6"x2	10"	2"	3"	3"
FXS-265024N	8'7"	16'5"	16'8"	1318	7'- 10"	20x2	6"x2	10"	2"	3"	3"
FXS-306022L	9'11"	19'9"	14'9"	1198	9'- 2"	10x2	6"x2	10"	2"	3"	3"
FXS-306022M	9'11"	19'9"	14'9"	1339	9'- 2"	15x2	6"x2	10"	2"	3"	3"
FXS-306022N	9'11"	19'9"	14'9"	1461	9'- 2"	20x2	6"x2	10"	2"	3"	3"
FXS-306022O	9'11"	19'9"	14'9"	1541	9'- 2"	25x2	6"x2	10"	2"	3"	3"

NOTES:

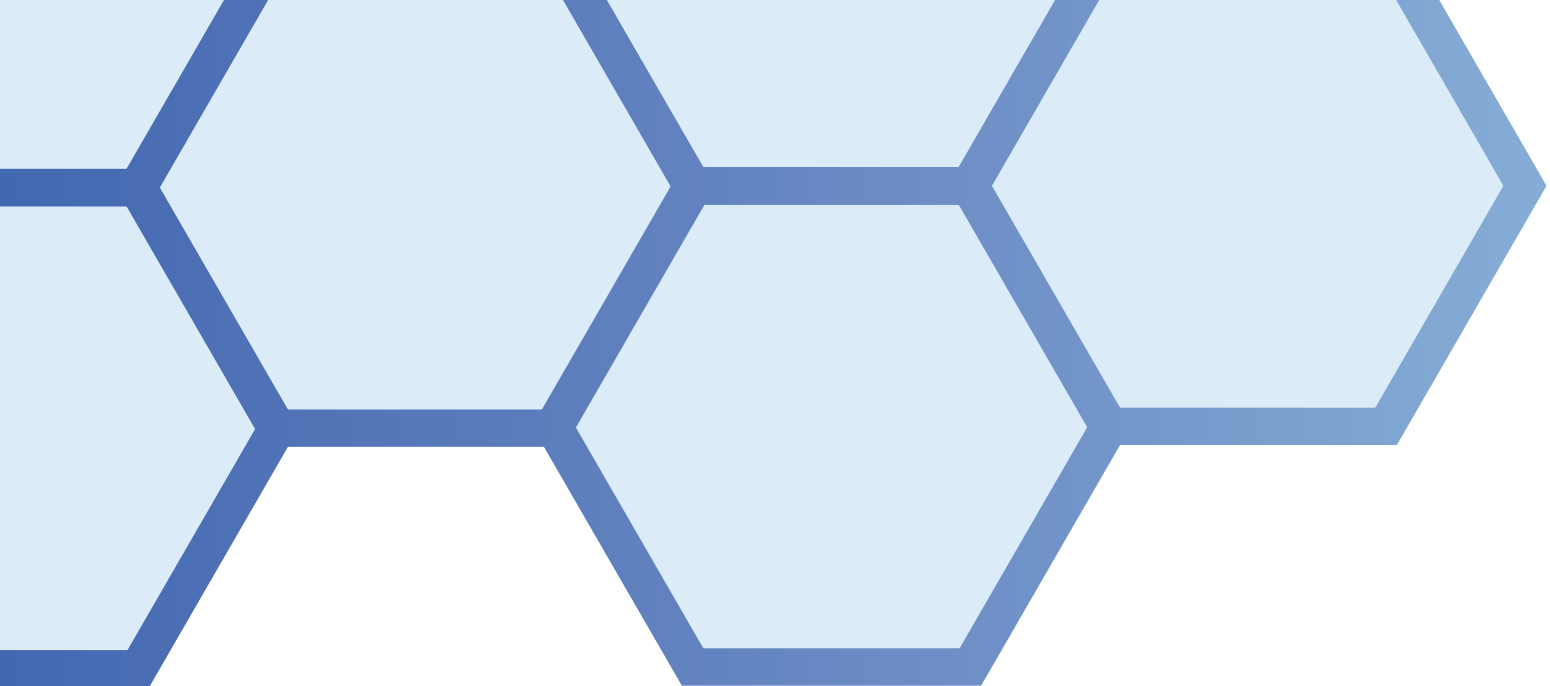
1. Cooling tower shall be installed away from the outside air intake of the building.
2. Do not use catalog drawings for certified prints. Dimensions and weights are subject to change. Obtain current drawings from sales representative.
3. Nominal gpm is based on 3 gpm per ton at 95°F entering water temperature, 85°F leaving water temperature, and 78°F wet-bulb temperature.
4. Adequate spacing must be provided to allow for easy access and maintenance to the cooling tower.

ENGINEERING DATA & DIMENSIONS

Model	Dimension			Nominal gpm (see note 3)	Fan Dia	Motor HP	Piping				
	W	L	H				Inlet	Outlet	Float Valve	Over Flow	Drain
FXS-306022P	9'11"	19'9"	14'9"	1621	9'- 2"	30x2	6"x2	10"	2"	3"	3"
FXS-306023L	9'11"	19'9"	16'0"	1294	9'- 2"	10x2	8"x2	10"	2"	3"	3"
FXS-306023M	9'11"	19'9"	16'0"	1446	9'- 2"	15x2	8"x2	10"	2"	3"	3"
FXS-306023N	9'11"	19'9"	16'0"	1575	9'- 2"	20x2	8"x2	10"	2"	3"	3"
FXS-306023O	9'11"	19'9"	16'0"	1666	9'- 2"	25x2	8"x2	10"	2"	3"	3"
FXS-306023P	9'11"	19'9"	16'0"	1742	9'- 2"	30x2	8"x2	12"	2"	3"	3"
FXS-306024L	9'11"	19'9"	17'0"	1364	9'- 2"	10x2	8"x2	10"	2"	3"	3"
FXS-306024M	9'11"	19'9"	17'0"	1519	9'- 2"	15x2	8"x2	10"	2"	3"	3"
FXS-306024N	9'11"	19'9"	17'0"	1659	9'- 2"	20x2	8"x2	10"	2"	3"	3"
FXS-306024O	9'11"	19'9"	17'0"	1754	9'- 2"	25x2	8"x2	12"	2"	3"	3"
FXS-306024P	9'11"	19'9"	17'0"	1837	9'- 2"	30x2	8"x2	12"	2"	3"	3"
FXS-306024Q	9'11"	19'9"	17'0"	2019	9'- 2"	40x2	8"x2	12"	2"	3"	3"
FXS-346422L	11'2"	21'0"	14'9"	1351	9'- 10"	10x2	8"x2	10"	2"	3"	3"
FXS-346422M	11'2"	21'0"	14'9"	1510	9'- 10"	15x2	8"x2	10"	2"	3"	3"
FXS-346422N	11'2"	21'0"	14'9"	1644	9'- 10"	20x2	8"x2	10"	2"	3"	3"
FXS-346422O	11'2"	21'0"	14'9"	1735	9'- 10"	25x2	8"x2	12"	2"	3"	3"
FXS-346422P	11'2"	21'0"	14'9"	1815	9'- 10"	30x2	8"x2	12"	2"	3"	3"
FXS-346423L	11'2"	21'0"	16'0"	1480	9'- 10"	10x2	8"x2	10"	2"	3"	3"
FXS-346423M	11'2"	21'0"	16'0"	1639	9'- 10"	15x2	8"x2	10"	2"	3"	3"
FXS-346423N	11'2"	21'0"	16'0"	1795	9'- 10"	20x2	8"x2	12"	2"	3"	3"
FXS-346423O	11'2"	21'0"	16'0"	1894	9'- 10"	25x2	8"x2	12"	2"	3"	3"
FXS-346423P	11'2"	21'0"	16'0"	1981	9'- 10"	30x2	8"x2	12"	2"	3"	3"
FXS-346424L	11'2"	21'0"	17'0"	1549	9'- 10"	10x2	8"x2	12"	2"	3"	3"
FXS-346424M	11'2"	21'0"	17'0"	1731	9'- 10"	15x2	8"x2	12"	2"	3"	3"
FXS-346424N	11'2"	21'0"	17'0"	1886	9'- 10"	20x2	8"x2	12"	2"	3"	3"
FXS-346424O	11'2"	21'0"	17'0"	1993	9'- 10"	25x2	8"x2	12"	2"	3"	3"
FXS-346424P	11'2"	21'0"	17'0"	2087	9'- 10"	30x2	8"x2	12"	2"	3"	3"
FXS-346424Q	11'2"	21'0"	17'0"	2284	9'- 10"	40x2	8"x2	12"	2"	3"	3"

NOTES:

1. Cooling tower shall be installed away from the outside air intake of the building.
2. Do not use catalog drawings for certified prints. Dimensions and weights are subject to change. Obtain current drawings from sales representative.
3. Nominal gpm is based on 3 gpm per ton at 95°F entering water temperature, 85°F leaving water temperature, and 78°F wet-bulb temperature.
4. Adequate spacing must be provided to allow for easy access and maintenance to the cooling tower.



PCT

PROTECTOWERS.COM
6935 NW 50TH ST, MIAMI, FL 33166
(305)594-3684

