



# KM-2200S\_J(Z)3

3 PHASE STACKABLE ICE CUBER



KM-2200S\_J(Z)3  
08/02/23  
Item # 13061

**W x D x H**  
48" x 27<sup>3/8</sup>" x 36<sup>7/16</sup>"

Shipping Dimensions  
51<sup>3/4</sup>" x 33" x 42.5"

**KM|EDGE™**

**KM-2200SWJ3**  
Water-Cooled 3 Phase  
Shown on optional bin: B-900

**KM-2200SRJZ3★**  
Remote Air-Cooled 3 Phase



Item #: \_\_\_\_\_  
Project: \_\_\_\_\_  
Qty: \_\_\_\_\_  
AIA#: \_\_\_\_\_

## Features

▶ Individual crescent cube

▶ Stainless steel evaporator

▶ CycleSaver™ design

- Up to 2221 lbs. of ice production per 24 hours
- Stackable for 4442 lbs. per 24 hours ice production in the same floor space
- Durable stainless steel exterior
- Protected by H-Guard Plus Antimicrobial Agent
- EverCheck™ alert system
- R-404A Refrigerant

### Available on Bins:

**B-800**    **B-1150SS**    **B-1500SS**    *Top kit may be required.*  
**B-900**    **B-1300SS**    **B-1650SS**    *See Bin Spec Sheets.*

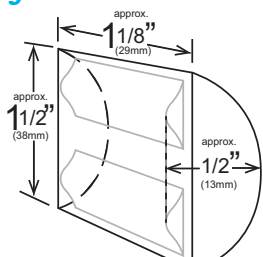
### Warranty:

Valid in United States, Canada, Puerto Rico and U.S. Territories.  
Contact factory for warranty in other countries.

Condenser	Model	ICE PRODUCTION		WATER USAGE		ELECTRICAL				Circuit Wires (including ground)	Heat Rejection BTU/hr.	Refrigerant Charge Amount	Net / Ship Weight (lbs.)	
		Air / Water Temp Lbs. per 24 hours 70° / 50°F    90° / 70°F	Potable Gal. per 100 lbs. 90° / 70°F	Condenser Gal. per 100 lbs. 90° / 70°F	kWh Used per 100 lbs. 90° / 70°F	Min. Circuit/ Max. Fuse Size	Amperage	Voltage						
3 Phase	Water	KM-2200SWJ3	2221	2200	15.0	95	3.11	30A	12.8A	208-230V/60/3	4	27,200	2 lbs. 16 oz.	390 / 400
	Remote	KM-2200SRJZ3	2206	2075	15.0	N/A	3.75	20A	15.9A	208-230V/60/3	4	26,700	8 lbs. 6 oz. 16 lbs. 1.5 oz.†	390 / 400

† (with condenser)

## KMEdge™ Cube Dimensions\*



\* approximate size in inches, image not to scale

## Operating Limits

- Ambient Temp Range 45 - 100°F
- Water Temp Range 45 - 90°F
- Water Pressure 10 - 113 PSIG
- Voltage Range 187 - 253V
- If GFCI is required, a GFCI breaker MUST be used in lieu of GFCI receptacle

## Service

- Panels easily removed and all components accessible for service.
- Allow 6" (15 cm) clearance at rear, sides, and top for proper air circulation and ease of maintenance/ service.

## Plumbing

- Icemaker Water Supply Line: Min. 3/8" Nominal ID Copper Water Tubing or Equivalent
- Icemaker Drain Line: Min. 3/4" Nominal ID Hard Pipe or Equivalent Water-Cooled Model (Lines Must Be Independent of Icemaker)
- Condenser Water Supply Line: Min. 3/8" Nominal ID Copper Water Tubing or Equivalent
- Condenser Drain/Return Line: Min. 3/8" Nominal ID Hard Pipe (open drain system) or Copper Water Tubing (closed loop system) or Equivalent

## Water Filter

Please refer to water filter spec sheet for recommended configurations.

Hoshizaki reserves the right to change specifications without notice.

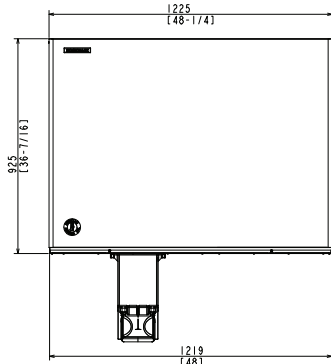


# KM-2200S\_J(Z)3

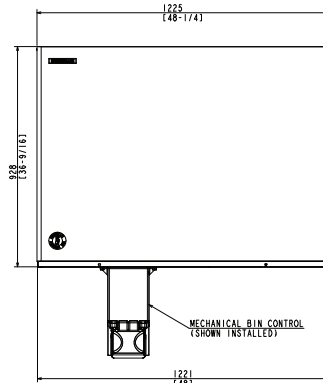
## 3 PHASE STACKABLE ICE CUBER

KM-2200S\_J(Z)3  
08/02/23  
Item # 13061

FRONT VIEW

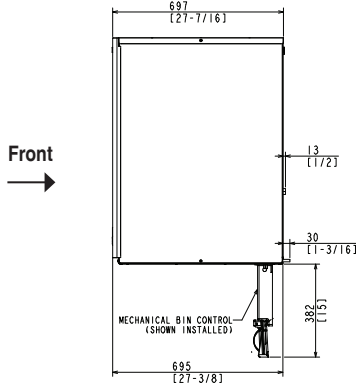


**WATER-COOLED**

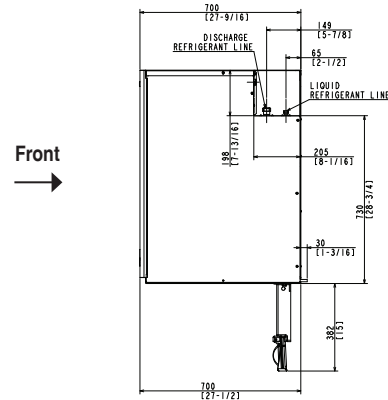


**REMOTE AIR-COOLED**

SIDE VIEW

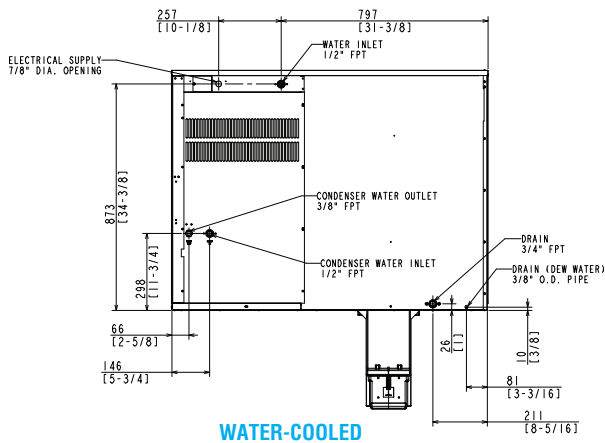


**WATER-COOLED**

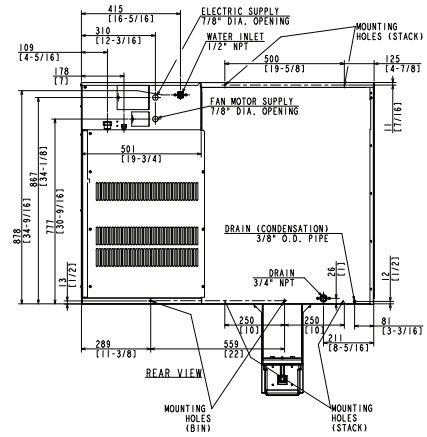


**REMOTE AIR-COOLED**

REAR VIEW

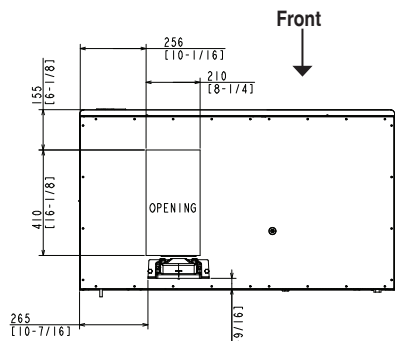


**WATER-COOLED**

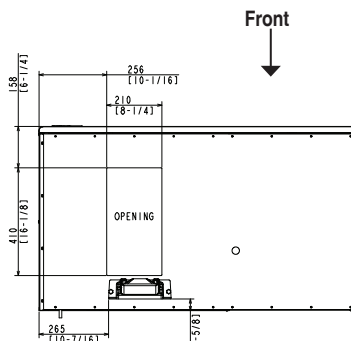


**REMOTE AIR-COOLED**

BOTTOM VIEW



**WATER-COOLED**



**REMOTE AIR-COOLED**

**URC-22FZ Remote Condenser (Sold Separately)**  
(W x D x H) 46 3/8 X 14 1/16 X 40 1/2  
For Use with KM-2200SRJZ3

**Brazed Line Sets (Sold Separately)**  
25' HS-5323  
35' HS-5324  
55' HS-5325



Voltage supply for the URC Remote Condenser is supplied from the Ice Maker. No additional circuit is required.

